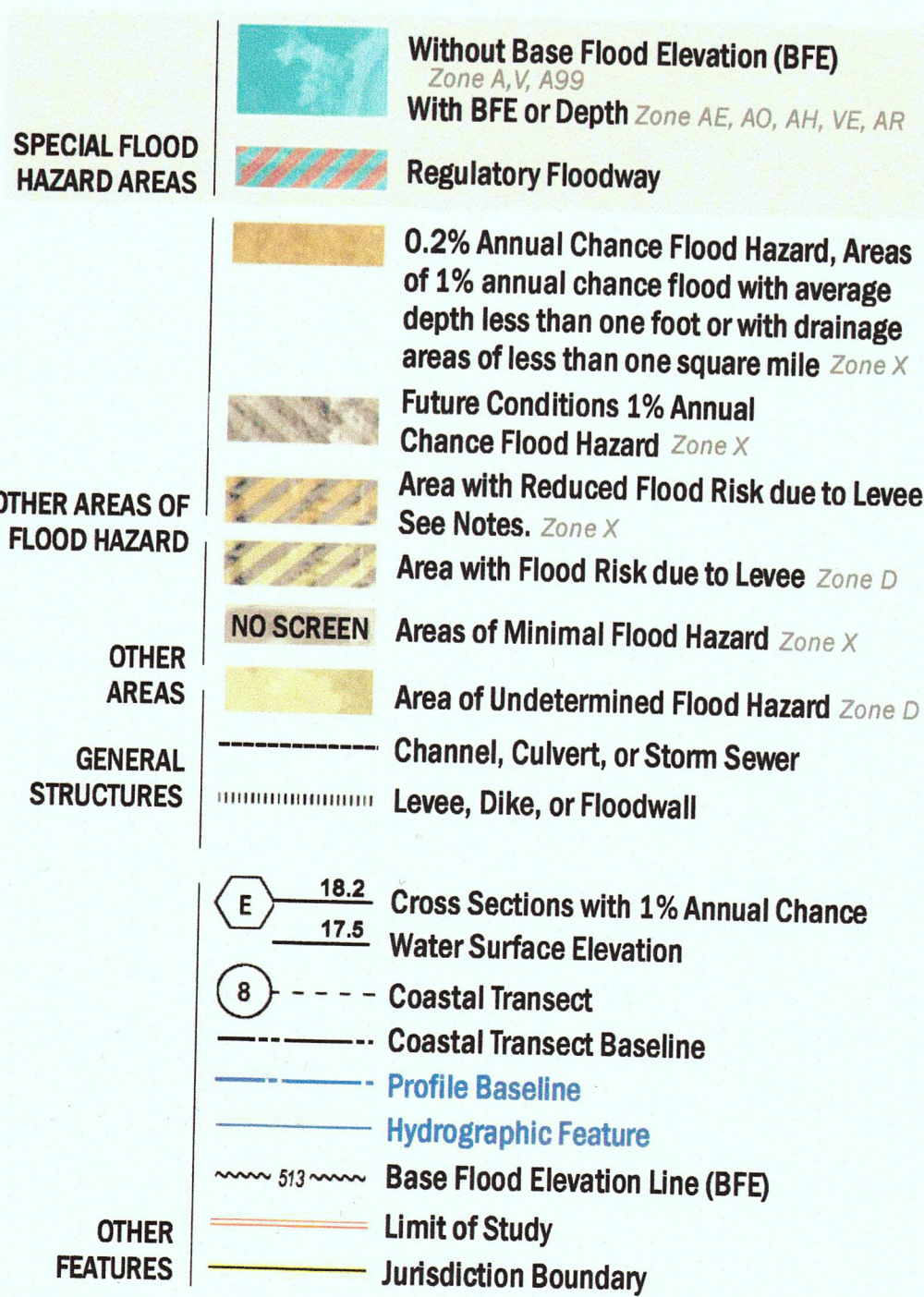


FLOOD HAZARD INFORMATION

SEE FIS REPORT FOR DETAILED LEGEND AND INDEX MAP FOR FIRM PANEL LAYOUT
THE INFORMATION DEPICTED ON THIS MAP AND SUPPORTING DOCUMENTATION ARE ALSO AVAILABLE IN DIGITAL FORMAT AT
[HTTPS://MSC.FEMA.GOV](https://msc.fema.gov)



NOTES TO USERS

For information and questions about this Flood Insurance Rate Map (FIRM), available products associated with the FIRM, including historic versions, the current map date for each FIRM panel, how to order products, or the National Flood Insurance Program (NFIP) in general, please call the FEMA Map Information eXchange at 1-877-FEMA-MAP (1-877-336-2627) or visit the FEMA Flood Map Service Center website at <https://msc.fema.gov>. Available products may include previously issued Letters of Map Change, a Flood Insurance Study Report, and/or digital versions of this map. Many of these products can be ordered or obtained directly from the website.

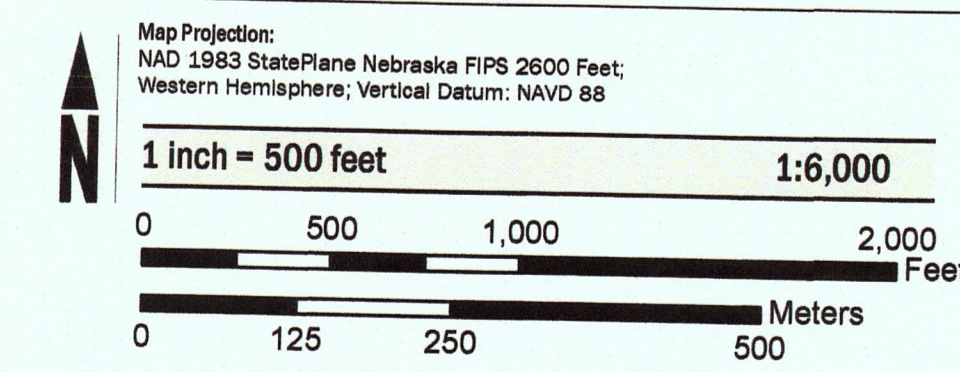
Communities annexing land on adjacent FIRM panels must obtain a current copy of the adjacent panel as well as the current FIRM Index. These may be ordered directly from the Flood Map Service Center at the number listed above.

For community and countywide map dates refer to the Flood Insurance Study Report for this jurisdiction.

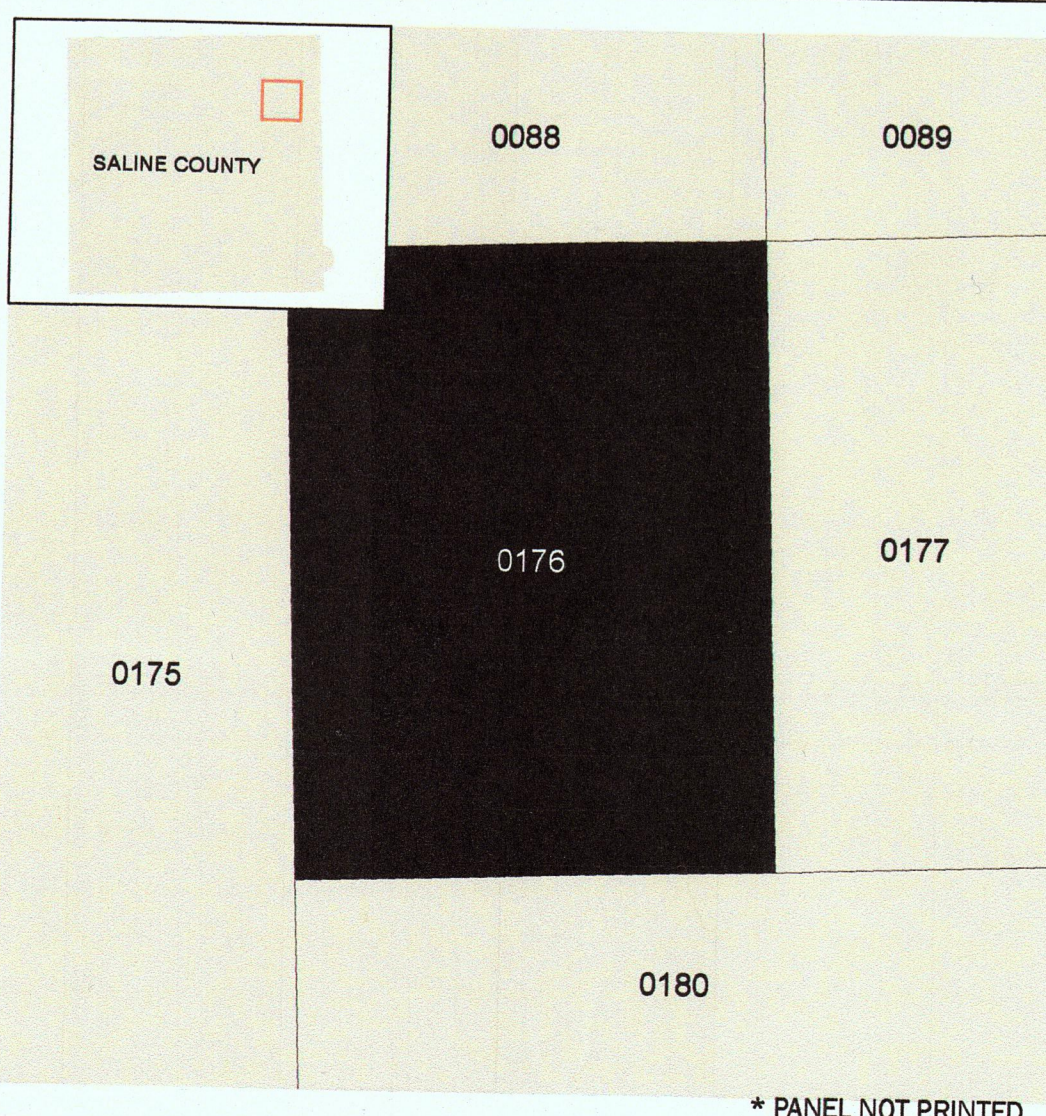
To determine if flood insurance is available in this community, contact your insurance agent or call the National Flood Insurance Program at 1-800-638-6620.

Base Map information shown on this FIRM was provided in digital format by the U.S. Farm Service National Agriculture Imagery Program (NAIP), dated 2007, and by the U.S. Geological Survey Digital Orthophoto Quadrangles, dated 1993 or later, produced at a scale of 1:12000. The data was obtained from the United States Department of Agriculture (USDA).

SCALE



PANEL LOCATOR



FEMA
 National Flood Insurance Program

NATIONAL FLOOD INSURANCE PROGRAM
 FLOOD INSURANCE RATE MAP

SALINE COUNTY, NEBRASKA
 and Incorporated Areas

PANEL 176 of 400

Panel Contains:

| COMMUNITY | NUMBER | PANEL | SUFFIX |
|---------------|--------|-------|--------|
| CITY OF CRETE | 310186 | 0176 | D |
| SALINE COUNTY | 310472 | 0176 | D |

REVISED TO REFLECT LOMR
EFFECTIVE: October 27, 2022

VERSION NUMBER
2.1.3.0

MAP NUMBER
31151C0176D

EFFECTIVE DATE
NOVEMBER 4, 2010