

1-Year Plan - 2020
Crete, Nebraska

PRIORITY NO.	PROJECT NO.	DESCRIPTION	TOTAL ESTIMATED CONSTRUCTION COST	GENERAL OBLIGATION COST
1	266	On 22nd Street west of Ivy Avenue Remove wooden bridge and construct quadruple box culvert 6-inch paving on both approaches and 5-foot sidewalk	\$420,000	\$420,000
2	295	13th Street and Iris Avenue Intersection Construct 110' Diameter Roundabout 9-inch PC concrete	\$788,000	\$79,000
3	296	18th Street and Iris Avenue Intersection Construct 120' Diameter Roundabout 9-inch PC concrete	\$1,150,000	\$575,000
4	276	On Norman Avenue, from 23rd Street to 24th Street Construct 6" P.C. concrete paving 32' wide with storm sewer	\$101,000	\$40,000
5	277	On 24th Street, from Main Avenue to Norman Avenue Construct 6" P.C. concrete paving 32' wide with storm sewer	\$101,000	\$40,000
6	279	On 18th Street from Main Avenue to Norman Avenue Construct 6" P.C. concrete paving 32' wide	\$101,000	\$40,000
7	281	On 19th Street Main Avenue to Norman Avenue Construct 6" P.C. concrete paving 32' wide with storm sewer	\$101,000	\$40,000
8	273	Tuxedo Park Road Bridge Replace existing wood deck bridge with P.C. concrete 32' wide bridge with 10' wide walkway	\$3,150,000	\$315,000
9	288	Tuxedo Park Bridge to Tuxedo Park Walk Bridge Construct 350' 5-inch P.C. concrete 8' trail walkway/bikeway	\$18,400	\$18,400
10	290	West 12th Street west of Arizona Avenue Construct 8-inch P.C. concrete 25' wide 825' long	\$101,000	\$0
11	215	On 20th Street, from Main Avenue to Norman Avenue Construct 6" P.C. concrete paving between existing 24' curb and gutter	\$61,000	\$14,000

6 Year Plan 2020 - 2025
Crete, Nebraska

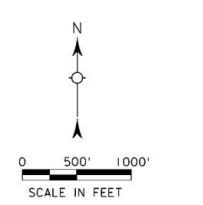
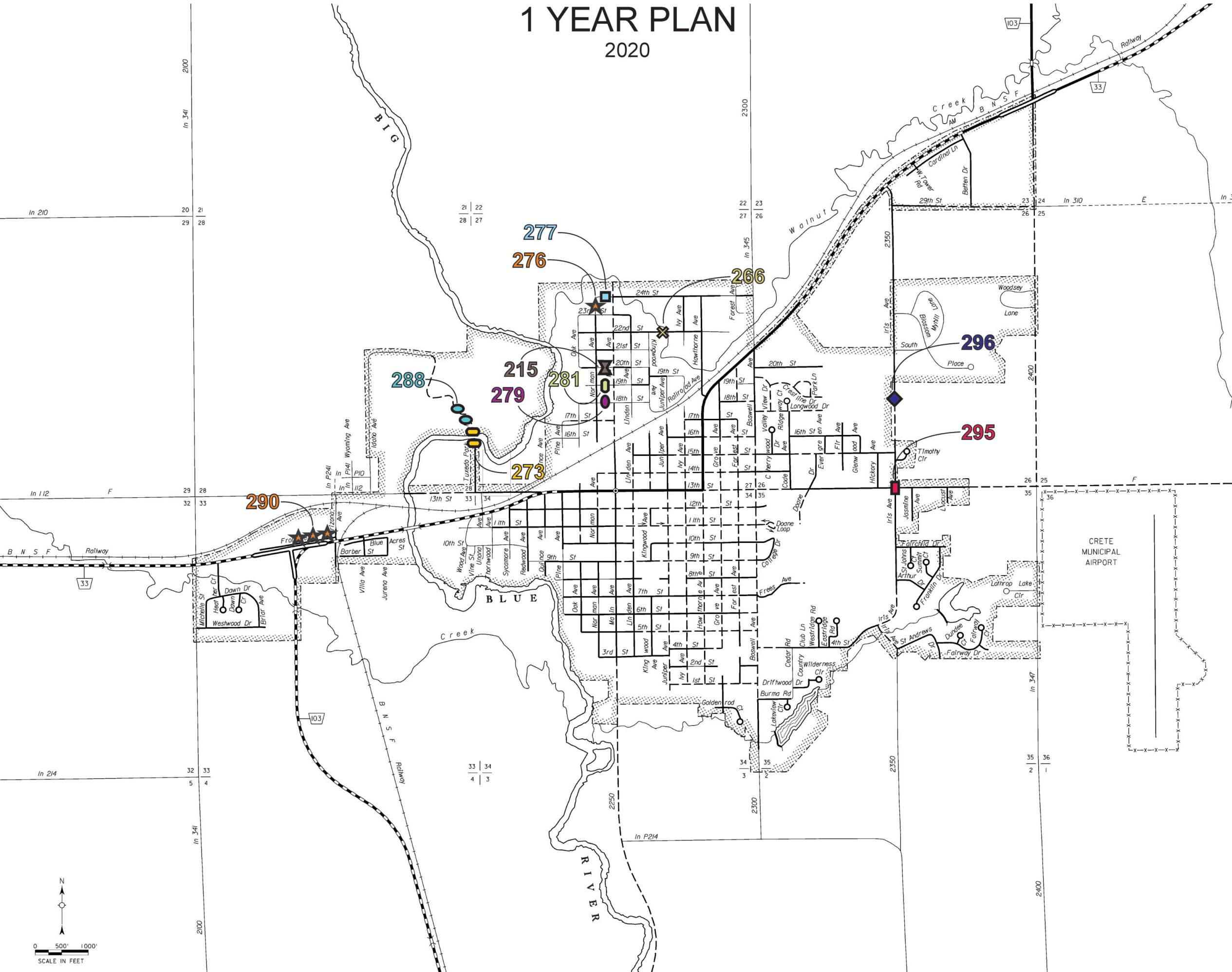
PRIORITY NO.	PROJECT NO.	DESCRIPTION	TOTAL ESTIMATED CONSTRUCTION COST	GENERAL OBLIGATION COST
1	265	On East 13th Street, from Jasmine Avenue to East City Limits Remove existing concrete; construct 8" P.C. concrete paving 32' wide with 5' sidewalks	\$797,070	\$233,100
2	207	On Kingwood Avenue, from 21st Street to 22nd Street Construct 6" P.C. concrete paving 32' wide with storm sewer	\$101,000	\$40,000
3	208	On 20th Street, from Linden Avenue to Kingwood Avenue Construct 6" P.C. concrete paving 32' wide with storm sewer	\$101,000	\$40,000
4	278	On Linden Avenue, from 19th to 21st Avenue Construct 6" P.C. concrete paving 32' wide with storm sewer	\$203,000	\$79,000
5	280	On 18th Street from Linden Avenue to Main Avenue Construct 6" P.C. concrete paving 32' wide with storm sewer	\$101,000	\$40,000
6	282	On 21st Street from Kingwood Avenue to Main Avenue Construct 6" P.C. concrete paving 32' wide with storm sewer	\$203,000	\$79,000
7	271	On North Main Avenue, from BNRR tracks to 24th Street Mill and overlay 2" asphalt 24' wide from existing edge including intersection approaches.	\$132,000	\$132,000
8	272	In Westwoods subdivision Remove and reconstruct entire 6" P.C. concrete paving 32' wide with curb and gutter, recompact and reset manholes to grade	\$1.48 Million	\$536,000
9	294	On Linden Avenue from 18th Street to 19th Street Construct 6" P.C. concrete paving 32' wide with storm sewer	\$65,000	\$15,000

CRETE

SALINE COUNTY
NEBRASKA

POPULATION 6,960 (2010 CENSUS)

1 YEAR PLAN 2020



CRETE

SALINE COUNTY
NEBRASKA

POPULATION 6,960 (2010 CENSUS)

6 YEAR PLAN

2020

