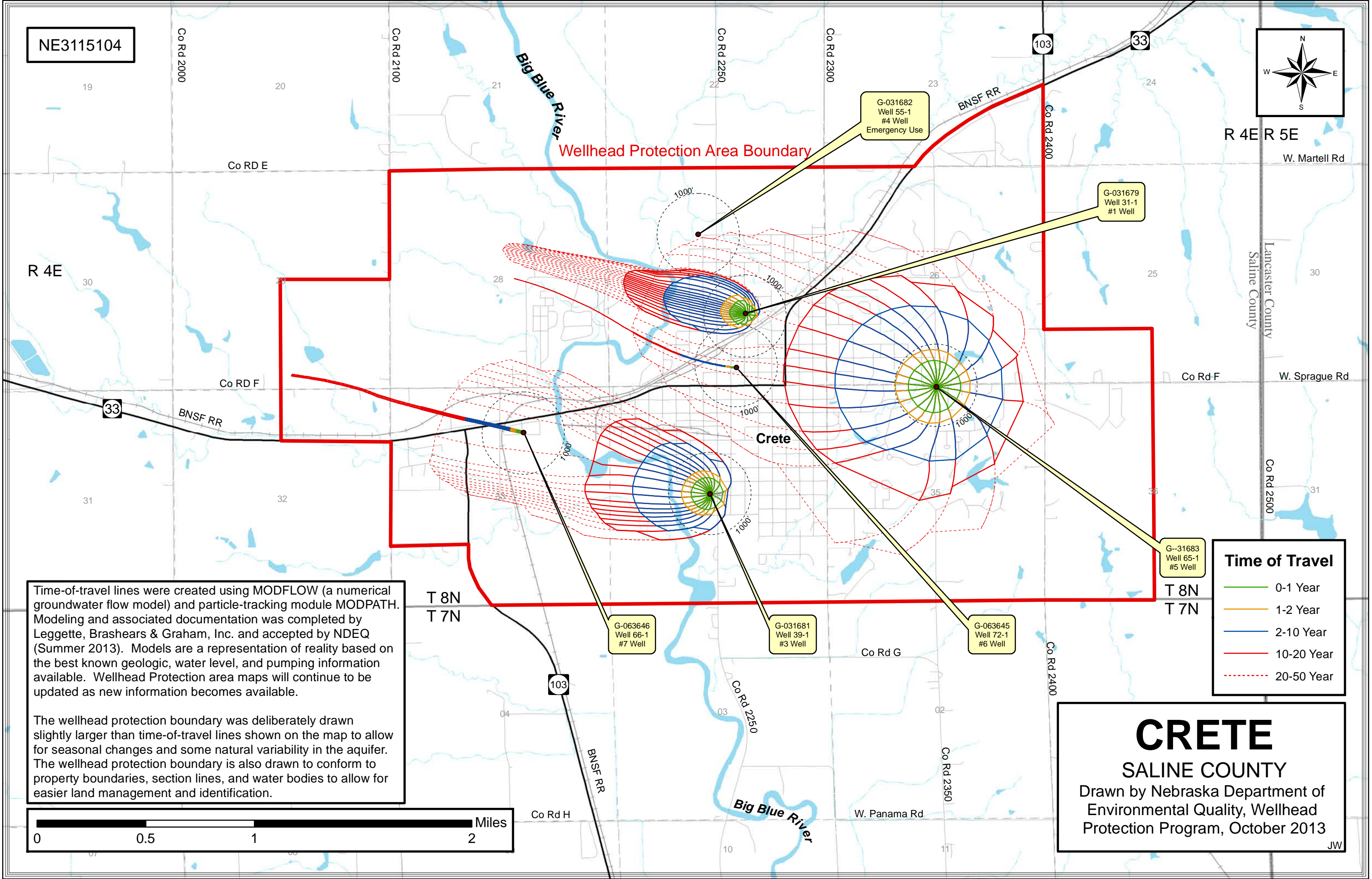
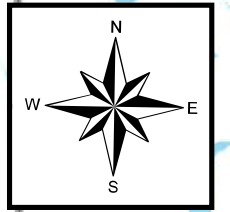


NE3115104

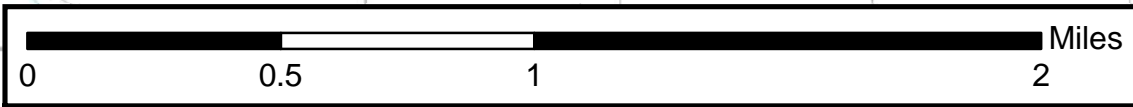


Time-of-travel lines were created using MODFLOW (a numerical groundwater flow model) and particle-tracking module MODPATH. Modeling and associated documentation was completed by Leggette, Brashears & Graham, Inc. and accepted by NDEQ (Summer 2013). Models are a representation of reality based on the best known geologic, water level, and pumping information available. Wellhead Protection area maps will continue to be updated as new information becomes available.

The wellhead protection boundary was deliberately drawn slightly larger than time-of-travel lines shown on the map to allow for seasonal changes and some natural variability in the aquifer. The wellhead protection boundary is also drawn to conform to property boundaries, section lines, and water bodies to allow for easier land management and identification.

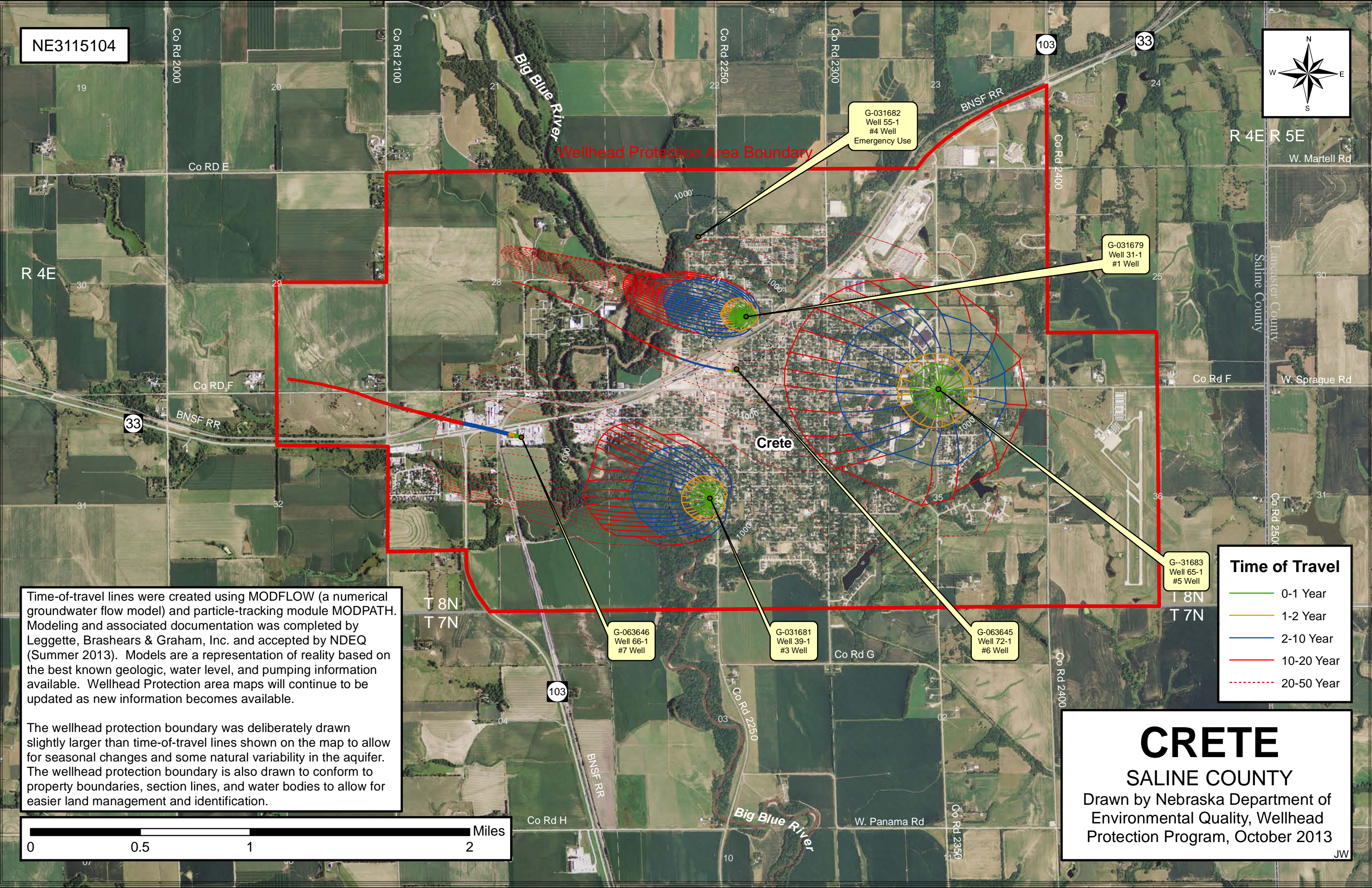
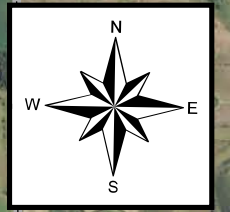
Time of Travel

- 0-1 Year
- 1-2 Year
- 2-10 Year
- 10-20 Year
- - - 20-50 Year



CRETE
SALINE COUNTY
Drawn by Nebraska Department of Environmental Quality, Wellhead Protection Program, October 2013

NE3115104

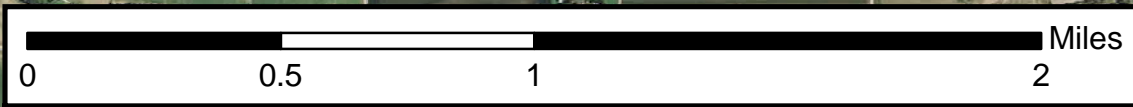


Time-of-travel lines were created using MODFLOW (a numerical groundwater flow model) and particle-tracking module MODPATH. Modeling and associated documentation was completed by Leggette, Brashears & Graham, Inc. and accepted by NDEQ (Summer 2013). Models are a representation of reality based on the best known geologic, water level, and pumping information available. Wellhead Protection area maps will continue to be updated as new information becomes available.

The wellhead protection boundary was deliberately drawn slightly larger than time-of-travel lines shown on the map to allow for seasonal changes and some natural variability in the aquifer. The wellhead protection boundary is also drawn to conform to property boundaries, section lines, and water bodies to allow for easier land management and identification.

Time of Travel

- 0-1 Year
- 1-2 Year
- 2-10 Year
- 10-20 Year
- 20-50 Year



CRETE
SALINE COUNTY
 Drawn by Nebraska Department of
 Environmental Quality, Wellhead
 Protection Program, October 2013

JW