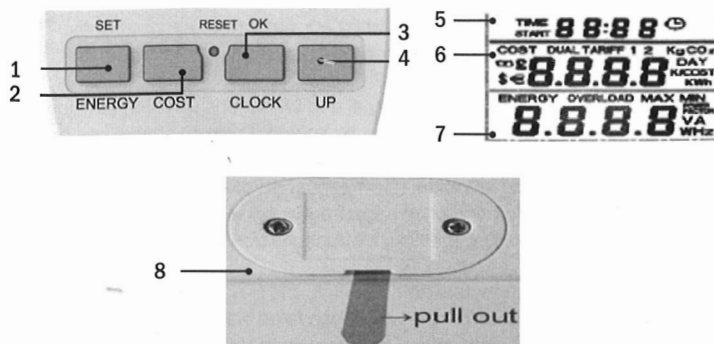


## Dual Tariff Power Meter

### PRODUCT OVERVIEW

#### MAIN UNIT



1. Set
2. ENERGY COST
3. RESET OK
4. Up

5. Time Rank
6. Cost Rank
7. Energy Rank
8. Plastic Pull Tab


### FEATURES

Dual tariff power meter is a smart electronic device than single tariff power meter, which can measure energy and cost of household appliances, and help users reduce the power bill and carbon emissions

## DISPLAY MODE

Turn on the power supply, the LCD Screen will show the whole content (as show on above picture, it will last about 3 seconds).

### CLOCK DISPLAY

The first rank displays  and 0:00. Before 60 min, the first number regards as mins (after 10 mins display two numbers), the next two number regard as sec. After 60 min, the first number regards as hour (after 10 hours display two numbers), the next two number regard as min.


### CUMULATIVE TIME DISPLAY

When it detected power overload 2w, it starts to cumulate time, the LCD display 0:00. Before 60 min, the first number regards as mins (after 10 mins display two numbers), the next two number regard as sec. After 60 min, the first number regards as hour (after 10 hours display two numbers), the next two number regard as min. When the time is above 24 hours, the cumulative time will reset.

### COST DISPLAY

The second rank shows the electric charge and so on, press "COST" button, it will take turns to show: accumulative electric charge (range: 0.000~9999 COST) → accumulative electric power (range: 0.000~9999 KWH) → Volume Kg of CO<sub>2</sub> (range: 0.000~9999 kg CO<sub>2</sub>, 1kwh change into 0.998 kg CO<sub>2</sub>) → rate of electric charge (range: 0.000~9999 COST/KWh), the default value of system is 1.00 COST/KWh).

Remark:

When electric charge and price are displayed on LCD, the currency symbol is always existed, and the system regard as initial currency .

### ELECTRICITY PARAMETER DISPLAY

Press "ENERGY" button, the third rank will take turns to show: present power (range: 0.000~9999W) → present voltage (range: 0.000~9999V) → present frequency (range: 0.000~9999Hz) → present current (range: 0.000~9999A) → present power factor (0.000~1.000 POWER FACTOR) → max overload watts (range: 0.000~9999 W) → MIN overload watts (range: 0.0W~9999 W) → overload alarm setting watts (range: 0.000~9999 W).

## OPERATION INSTRUCTIONS

### Clock setting

Keep pressing "CLOCK" button over 3 sec, it will enter into time setting mode. Flashing number can be selected when press "SET" button, then press "UP" button for setting. When you finish setting, press "OK" button. It will save your setting, and display the clock time.

### Change-over between clock time and cumulative time

"CLOCK" button works for change-over between clock time and cumulative time. For example, if you press "CLOCK" button when LCD displays clock time, it will change to cumulative time. The first rank displays hour part, the second rank displays day part (range: 0.000~9999 days). When LCD displays cumulative time, the will disappear.

### Cost setting

Press "COST" button over 3 sec, it will enter into electric charge setting mode, then please set as follows:

- This product has four kinds of currency symbol, such as ( money symbol); £ (pound); \$ (USD); € (euro). Press "UP" button to choose the symbol that you want, then press "OK" button to finish.
- When finished the currency setting, please press "UP" button to choose the tariff. Simple tariff is "TARIFF 1", dual tariff is "DUAL TARIFF". Press "UP" button to choose what you want, then press "OK" button to finish.
- If you choose "DUAL TARIFF", please press "SET" button to choose the twinkle number (the second rank of LCD), then press "UP" button to set rate (range: 0.000~9999 COST/KWH). When finish, please press "OK" button.
- Then "time start" displayed on LCD, please press "set" button to choose the twinkling number (first rank on LCD), then press "UP" button for setting (range of first two numbers: 0-23; range of last two numbers: 0-59). When you finish, please press "OK" button. When finished all setting, please press "COST" button for saving all parameter, then it will enter into initial LCD displayed mode.

### Remark:

- If choose simple tariff "TARIFF 1", you just need to set the rate of "TARIFF 1", then press "COST" button for saving all parameter, then it will enter into initial LCD displayed mode.


- B. When set price parameter ,the currency symbol must be displayed.
- C. If the system is in “DUAL TARIFF” mode, finished tariff 2 means the start of tariff 1; finished tariff 1 means the start of tariff 2.

### ELECTRICITY PARAMETER SETTING

Press “ENERGY” button more than three seconds, it will enter into “OVERLOAD” watts setting, the “OVERLOAD” on the screen will blink, press “SET” button to select, then press “UP” button for setting. When finished, please press “ENERGY” button.

- A. If you press the button but don't do any response, it will quit the OVERLOAD automatically.
- B. When current load power exceed the overload parameter which set before, the “OVERLOAD” will keep twinkling, it means dangerous and have safety loophole, system regard as initial parameter 3680W.

### ACCUMULATED ELECTRIC CHARGE CLEARANCE

Press“ENERGY” and “COST” button simultaneously when “COST”and“” symbol display in screen ,the accumulated electric charge can be cleared,but the accumulated time and the accumulated power can keep the same.

### REMARK

1. The letters “COST” which is on the upper left corner of second rank, and the letters “ENERGY” which is on the upper left corner of third rank will always display on LCD.
2. In setting mode, keep pressing “up” button, the number will increase rapidly, then will stop if you stop.
3. Time will be accumulated after monitoring the load power, but it should be at least 2W.
4. If there is an abnormal display appears or the buttons have no response, please press “RESET” button for recovering.

### TECHNICAL PARAMETERS

For EU&UK Plug Technical Parameters:

Voltage: 230Vac/50Hz  
Max load current: 16A  
Max load power: 3680W

For US Plug Technical Parameters:

Voltage: 125Vac/60Hz  
Max load current: 15A  
Max load power: 1875W

For AU Plug Technical Parameters:

Voltage: 240Vac/50Hz  
Max load current:10A  
Max load power:2400W

### WORKING CONDITION

Working Voltage:175-276Vac (for EU&AU);110-130Vac(for US)  
Voltage Frequency: 45-65HZ  
Working Current: ≤16A  
Working Temperature: 0-50°C

### EXCEPTION ANALYSIS

1. Please check whether the power meter and power supply is in good connection.
2. Please check whether the power meter and electric appliance is in good connection.
3. Please check the battery in the power meter whether can be normally used.

### PRECAUTIONS

- Only to be used indoor.
- Only to be used in dry conditions.
- Only to be used within max load

## WARRANTY

BALDR provides a 1-year limited warranty on this product against manufacturing defects in materials and workmanship.

Warranty service can only be performed by our authorized service center. The original dated bill of sale must be presented upon request as proof of purchase to us, or our authorized service center.

The warranty covers all defects in material and workmanship with the following specified exceptions:(1) damage caused by accident, unreasonable use or neglect (including the lack of reasonable and necessary maintenance); (2) damage occurring during shipment (claims must be presented to the carrier); (3) damage to, or deterioration of any accessory or decorative surface;(4) damage resulting from failure to follow instructions contained in your owner's manual.

This warranty covers only actual defects within the product itself, and does not cover the cost of installation or removal from a fixed installation, normal set-up or adjustments, claims based on misrepresentation by the seller or performance variations resulting from installation-related circumstances.

To receive warranty service, the purchaser must contact with BALDR nominated service center for the problem determination and service procedure.

Thank you for your choice of BALDR products!

**BALDR**

[www.baldr.com](http://www.baldr.com)  
[service@baldr.com](mailto:service@baldr.com)